



Support Article:

17 How to Export DWG from Revit

Revised: October 2022

Disclaimer

This document is available to each Customer, as per the License Agreement with QARC Systems Pty Ltd. Errors and omissions excepted.

QARC Systems Pty Ltd makes every reasonable effort to ensure the accuracy and validity of the information provided in this document and does not make any representations, warranties or guarantees express or implied, as to the accuracy or completeness of the document. Neither QARC Systems Pty Ltd nor any of its directors, officers, employees or agents shall be liable in contract, tort or in any other manner whatsoever to any person for any loss, damage, injury, liability, cost or expense of any nature, including without limitation incidental, special, direct or consequential damages arising out of or in connection with the use of this document.

The intent of this document is to share ideas and knowledge which QARC Systems Pty Ltd and others have come upon to assist you in using Revit. They are not intended to be instructions or content related to the QARC system and any reference to other products is not intended to be an endorsement of that product.

This document is proprietary to QARC Systems Pty Ltd. No part of the document shall be used, reproduced, translated, converted, adapted, stored in a retrieval system, communicated or transmitted by any means, for any commercial purpose, including without limitation, sale, resale, license, rental or lease, without the prior express written consent of QARC Systems Pty Ltd.

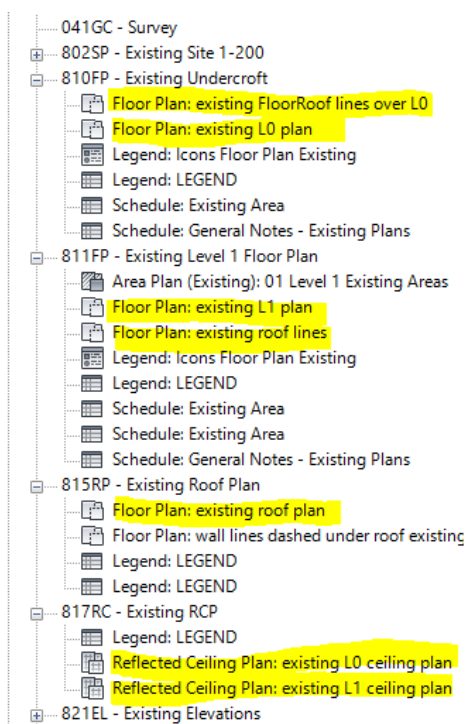


This is relatively simple with a few key points.

In this scenario we are assuming you need to provide underlay linework, in AutoCAD to a consultant such as a structural engineer.

First off, get an idea of which views you wish to export. It is usually best to provide views, not sheets, as the consultant ideally should not receive your Titleblock. There is a But though. If there are multiple views on a sheet, such as an overlaid view with linework, like roof lines, then maybe export the sheet. Although, you can simply export each view on that sheet.

So, look in the Project Browser, and expand the sheets you need to export.



Here is a snapshot of the ARChetype, 800 series, existing, for a project that involved a lifted building.

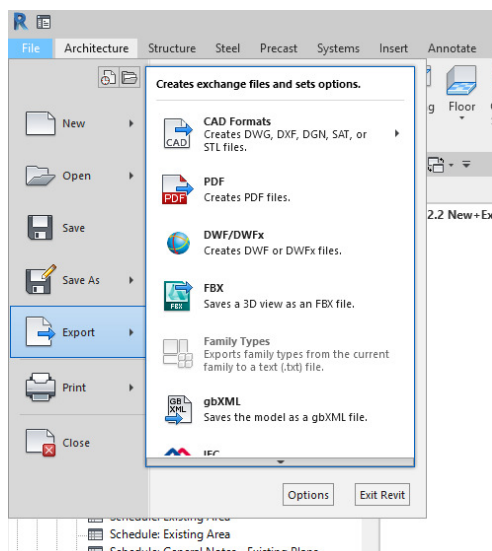
The sheets of floor plans are expanded.

Those highlighted are the ones that the engineer will most likely want.

We find it useful to do a snippy or two of the expanded Project Browser, and put those on a second screen.

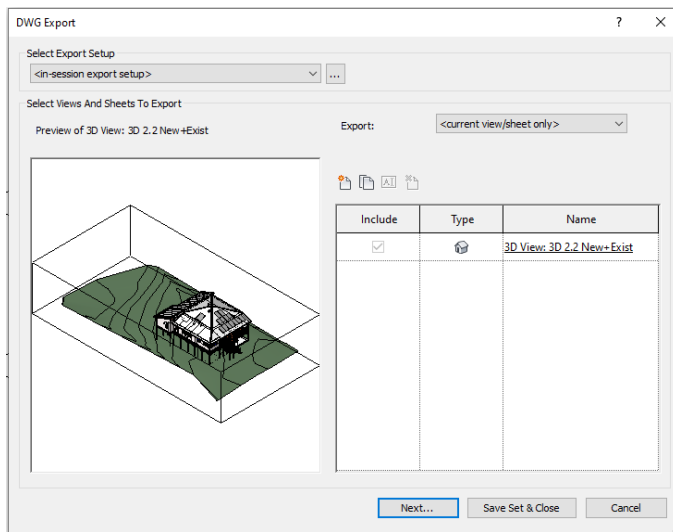
In addition to existing plans, you'll need to select new plans, but for this exercise, this is enough to give you the idea.

We suggest, if you use Snipping Tool, use the highlighter so you don't forget.



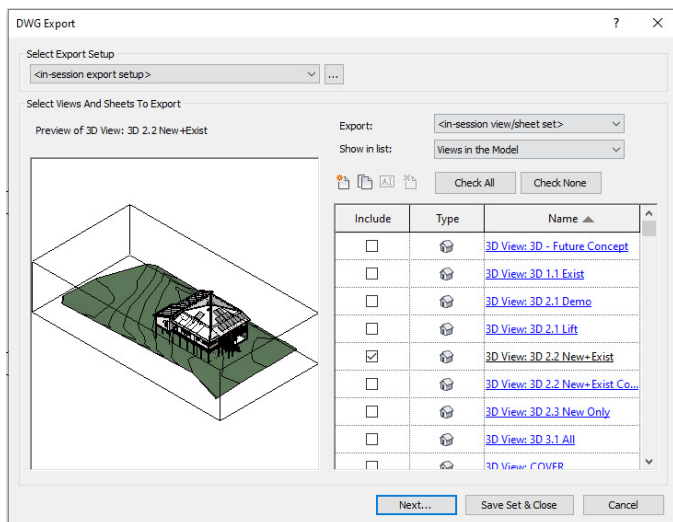
Go **File\Export\Cad Formats**

Hover over that and another box appears, choose **DWG**.



Up pops this window, with the current view in the left box.

The next task is to select the views that you want to export.



On the right side, In **Export:**

Drop down and select **<in-session view/sheet set>**.

The next choice will appear, **Show in list:**

Choose **Views in the Model**. There are a few other choices, like Sheets in the Model, but for this exercise we want Views.

You will see ALL the views appear. Starting with 3D Views and then

alphabetically through all the view types.

But first, select **Check None**. Why? Because Revit assumes you want to export the current view. Most people will have a 3D view open, and you don't want to export that view as DWG, as it can be a bit large and almost no consultant will want it anyway. Does not matter if you forget though, because you can easily delete the exported DWG file.

How to Export DWG from Revit

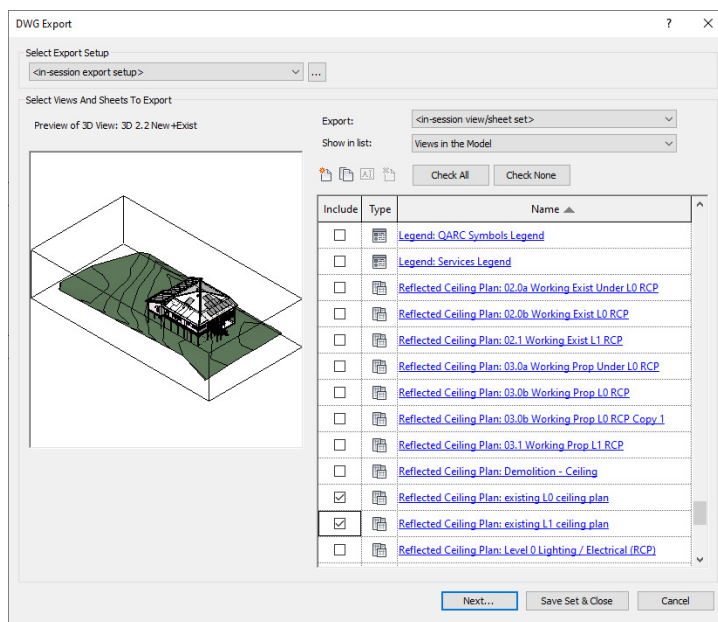
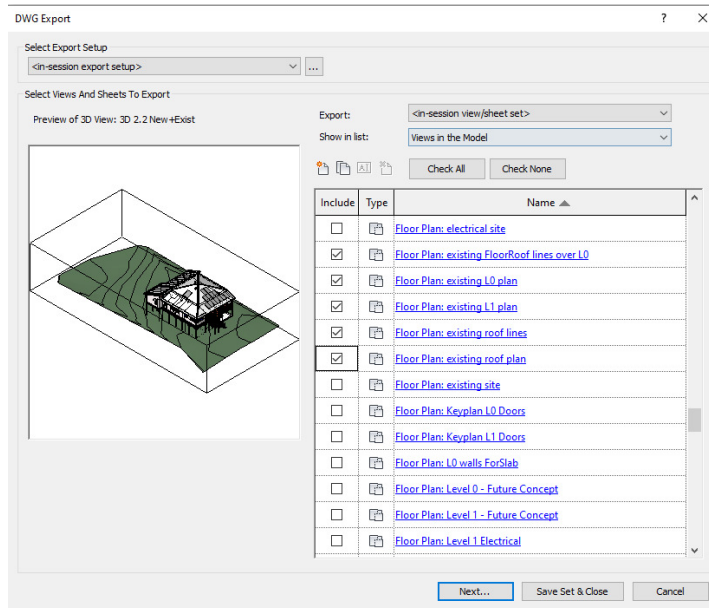
Now you tick the **Include** box for those views you want to export.

We find it a good idea to expand the window using the bottom right triangle so you can see the full view names.

Scroll down to F for Floor Plan.

Choose those Floor Plans that you selected at the start and are sitting over on your 2nd screen, highlighted from the Snippy.

There will be more to scroll down to (or up maybe).

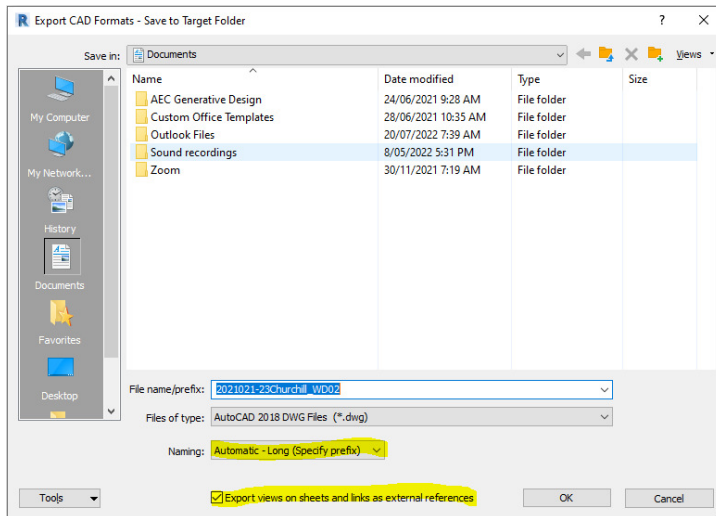


In this exercise, we also need Reflected Ceiling Plans for the engineer, as our example project has modelled all the floor framing under the building, plus the model has the building's ceilings and arches all modelled. These views are very useful to a structural engineer.

So check the boxes.

Keep going, selected any other views that you want to export, from New Floor Plans, Sections, Elevation, in other words, all that you know the consultant will need.

Then hit **Next...**



Up pops this Export CAD window.

You have a few things to do now.

First choose where to place the DWG files that you are exporting, in the usual way. We won't show that.

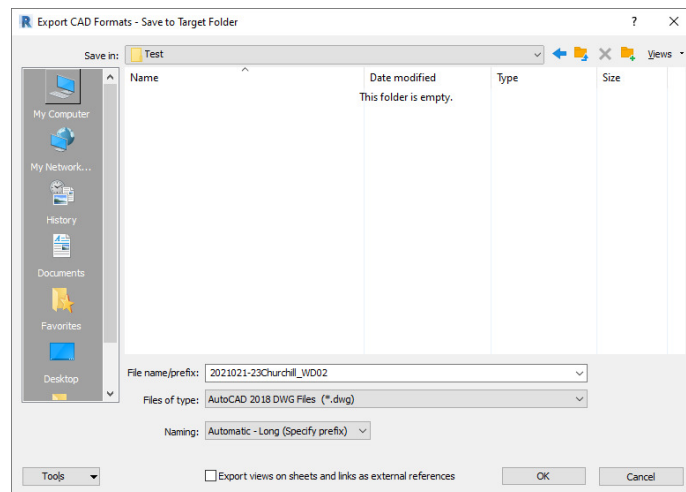
But be mindful of three things.

Make sure the **File name/prefix** is what you want. If this is too long, your computer may struggle with an over-long file name. This process can

append a lengthy set of characters which includes the view type and the name of that view. Although it is easy to rename the DWG files later.

The highlighted items -

Naming: If you leave this as Automatic it will append the full names of the view type and view name. That is ok, but you may prefer Short. Short tends to use just the view name with no prefix, or if you had chosen to export Sheets, Short just uses the Sheet Number. For this exercise we'll leave it as Automatic.



Export views on . . . As a general rule, we recommend unticking this one. The reason is that external references will create a set of AutoCAD files with the views linked back to one file, utilizing the XREF system in AutoCAD. This is not something is easily navigated by others, and they simply want your views. If you are exporting only views, it should not create XREF files, but we suggest unticking anyway.

The picture at left is showing the example selections with a folder location up in **Save in:**, **File name** left as is, **Files of type** left as AutoCAD 2018, **Naming:** as Automatic and of course **Export views** unchecked.

Please note, in **Files of type:** you can choose earlier versions of AutoCAD. If you suspect your consultant needs that. In this example we are using Revit 2022, and it defaulted to AutoCAD 2018.

Hit **OK**.

Revit goes off briefly and creates the DWG files. You'll see action in the bottom left corner, and it is quick.

So, let's look at what it did.

Name	Date modified	Type
2021021-23Churchill_WD02-3D View - 3D 2-2 New+Exist.dwg	20/07/2022 8:53 AM	DWG File
2021021-23Churchill_WD02-3D View - 3D 2-2 New+Exist.pcp	20/07/2022 8:53 AM	PCP File
2021021-23Churchill_WD02-Floor Plan - existing FloorRoof lines over L0.dwg	20/07/2022 8:53 AM	DWG File
2021021-23Churchill_WD02-Floor Plan - existing FloorRoof lines over L0.pcp	20/07/2022 8:53 AM	PCP File
2021021-23Churchill_WD02-Floor Plan - existing L0 plan.dwg	20/07/2022 8:53 AM	DWG File
2021021-23Churchill_WD02-Floor Plan - existing L0 plan.pcp	20/07/2022 8:53 AM	PCP File
2021021-23Churchill_WD02-Floor Plan - existing L1 plan.dwg	20/07/2022 8:53 AM	DWG File
2021021-23Churchill_WD02-Floor Plan - existing L1 plan.pcp	20/07/2022 8:53 AM	PCP File
2021021-23Churchill_WD02-Floor Plan - existing roof lines.dwg	20/07/2022 8:53 AM	DWG File
2021021-23Churchill_WD02-Floor Plan - existing roof lines.pcp	20/07/2022 8:53 AM	PCP File
2021021-23Churchill_WD02-Floor Plan - existing roof plan.dwg	20/07/2022 8:53 AM	DWG File
2021021-23Churchill_WD02-Floor Plan - existing roof plan.pcp	20/07/2022 8:53 AM	PCP File
2021021-23Churchill_WD02-Reflected Ceiling Plan - existing L0 ceiling plan.dwg	20/07/2022 8:53 AM	DWG File
2021021-23Churchill_WD02-Reflected Ceiling Plan - existing L0 ceiling plan.pcp	20/07/2022 8:53 AM	PCP File
2021021-23Churchill_WD02-Reflected Ceiling Plan - existing L1 ceiling plan.dwg	20/07/2022 8:53 AM	DWG File
2021021-23Churchill_WD02-Reflected Ceiling Plan - existing L1 ceiling plan.pcp	20/07/2022 8:53 AM	PCP File

All the selected views were exported as DWG and PCP.

You'll see that the highlighted files, the 3D view, was exported too. We deliberately did not Uncheck at the very beginning to show you this. The 3D DWG file is over 6Mb, and you do not want to send it to a consultant, unless they specifically want it.

What are the PCP files? We always delete these. They are instructional files that AutoCAD uses to print linework at correct thicknesses and styles. Most consultants do not need these, as they only need your linework as underlays. Besides, you will be sending your drawings as PDF anyway.

So you can now send your consultant all the DWG files and save them hours of drafting work!